



West Side
Family Health



ANNUAL REPORT
2019

A Message from the President of the Board, Eric Cooper

What a privilege your Board has to serve the communities of our West Side Health Care District! We are local citizens serving as Board members whose mission is to create and maintain the resources to meet the health care needs of the patients and families of the Westside. The legacy of Board members from our community serving the West Side Hospital and West Side Health Care District Boards dates back to 1947.

As our current Board members continue that legacy of meeting the challenges--in a changing health care industry--we continue on the exciting journey we began in 2018 to expand the capacity of the West Side Family Health Care Clinic. The Clinic expansion project is well under way and expected to be operational in the fall of this year. With the additional Clinical space available your Board continues with the plan to offer additional medical services in the near future.

The Health Care District Board, District Staff, and the providers and staff of West Side Family Health Care Clinic respect and appreciate the support of our community! Our commitment to a stronger future of health and wellness services to the families and patients that we serve remains strong.

A Message from the Executive Director, Gerald Starr

Our Annual report for 2018 noted the goal of an addition of 12,810 square feet of clinical space to the existing Clinic. The Site development for a modern Clinic with 9 examination and 3 treatment rooms began on August 14, 2018. The \$9.3 million dollar facility project construction in progress is about 50% complete and is expected to be completed and operational in the fall of 2019.

We have several short-term goals. The first of which is, of course, to bring the new Clinic space into full operation. Another short-term goal is to recruit a second full-time Board Certified Family Medicine physician to the Westside. This will continue the development of our Primary Care mission to the patients, families and citizens of the West Side Health Care District. We will continue our Walk-in clinic services during the Clinic's 88 hours of operations, 7 days a week.

We will continue to evaluate other health services in support of--or in collaboration with--other health care providers. Our long-term goal is to develop a sustainable level of health care services on our Health Care Campus at a financially feasible cost to the tax payers of the District.

We continue with our goal to establish dental services in the existing Clinic when the new Primary Care and Walk-in Clinic space is operational. Our Radiology Services to our patients and the patients of other providers will continue.

In all of our change---Clinic structure, training, planning and new programs---I continue to acknowledge the commitment and dedication of our Clinic staff: The physicians, nurse practitioners and their Clinic support team members continue to do a tremendous job!

Patient healthcare is our Mission. The leadership of the Board of Directors and the hard work of the District Office staff will continue to meet the challenges of providing healthcare in a rural setting. We appreciate the support of the citizens of the communities of the West Side Health Care District. We will strive to earn the trust and respect of our patients and their families.

A message from the Medical Director, Ronald J. Ostrom, D.O.

I am now entering my second year as the Medical Director for the West Side Health Care District and West Side Family Health Care Rural Health Clinic and I am excited about the positive influence and changes I have been able to elicit in my role at the Clinic. We continue to meet our objective to offer the best possible primary care services as well as acute care and walk-in services for our patients.

In reviewing our previous goals, we continue to work towards and effectively achieve our mission of improving the health outcomes of our patients. Since starting at the District, we have successfully recruited a full time Family Practice Physician and two Nurse Practitioners to help us meet this goal.. These hires have provided more consistent provider scheduling and have enabled our Clinic to reduce our dependency on temporary providers. This has significantly improved the health care services our patients are receiving.

Our efforts will continue to focus on expanding access to primary care services through the expansion of the Clinic. We will also continue to evaluate offering select specialty services through face-to-face encounters and growing specialty services through telemedicine.. We understand greater access to these services are important to the patients we serve due to their limited resources and transportation issues.

Community involvement remains an integral component of our mission. We are proud of our involvement at the West Side Rotary Health Fair and student health physical events at Taft Union High School and the Recreation and Parks District. In addition, I and others will offer medical services for the Taft High School Football team. My involvement in concussion management and education for all of Kern County High School District's coaches, athletic directors and athletic trainers for the last decade will help improve the standard of care on the sideline and help keep our student athletes safe. Our medical team looks forward to strengthening our relationship with the community in the years to come.

We are excited about the steps West Side Family Health Care is taking to expand health care services on the West Side as we raise the standard of care for our patients. We will continue to move toward our goal of being the leader in quality healthcare for the West Side communities.

Our History

The West Side Hospital District was created in 1947 and operated the West Side District Hospital in Taft from 1952 until 1998. The District sold the Hospital to Catholic Healthcare West (CHW) in 1998. In 2003 CHW closed the Mercy Westside Hospital. In another location the District opened a small urgent care clinic in 2004.

On December 22, 2008, the District purchased the closed Hospital property from CHW which included a separate outpatient clinic. The District initiated some renovations and modifications and the facility opened in March of 2010 as West Side Urgent Care. The expanded Urgent Care included Digital radiology and Clinical Laboratory services.

In 2015 the District Board made the strategic decision to address the need for improved/enhanced access to primary care for the citizens and communities of the West Side Health Care District. A plan was set in motion to convert the Urgent Care Clinic to a federally certified Rural Health Clinic. That goal was achieved with CMS certification of the West Side Family Health Care Clinic effective January 12, 2017.

Two full-time Board Certified primary care physician are the core of our medical staff along with a stable schedule of per diem physicians which enables the expanded access to daily health services 365 days a year. We offer two excellent mid-level Nurse Practitioners for 50% or more of our Clinic operating hours. We continue our telemedicine services. The Clinic is a provider for the Vaccine for Children (VFC) and will become a provider for the Children's Health and Development Program (CHDP).

The District has begun construction of a \$9,000,000 Outpatient Clinic expansion project of approximately 12,800 square feet. The new space will include additional treatment space(s) and separate adult and pediatric clinics plus operational support space. The project anticipates a \$5,300,000 equity contribution by the District and a \$4,000,000 grant from an anonymous donor. The West Side Health Care Foundation is active in supporting the grant and additional fund raising directly through the Foundation Board's fund raising activities.

Our Mission Statement

“As a rural health care district dedicated to the healing arts, we are committed to meeting the challenges of the future by preserving quality health care services for the needs of the Westside community we serve.”



Eric Cooper
President



Adele Ward
Vice President

BOARD MEETINGS

Board meetings are held on the 4th Thursday of each month at 2:00pm.

Located at the West Side Health Care District Office
119 Adkisson Way • Taft, CA 93268



Virginia Miller
Secretary

Regular meetings of the board are open to the public.

Agendas are posted 72 hours in advance of meetings.

(WSHCD Admin Office • WSHCD Website)

Contact the administrative office for additional information or special needs assistance.



Janice Ashley
Board Member

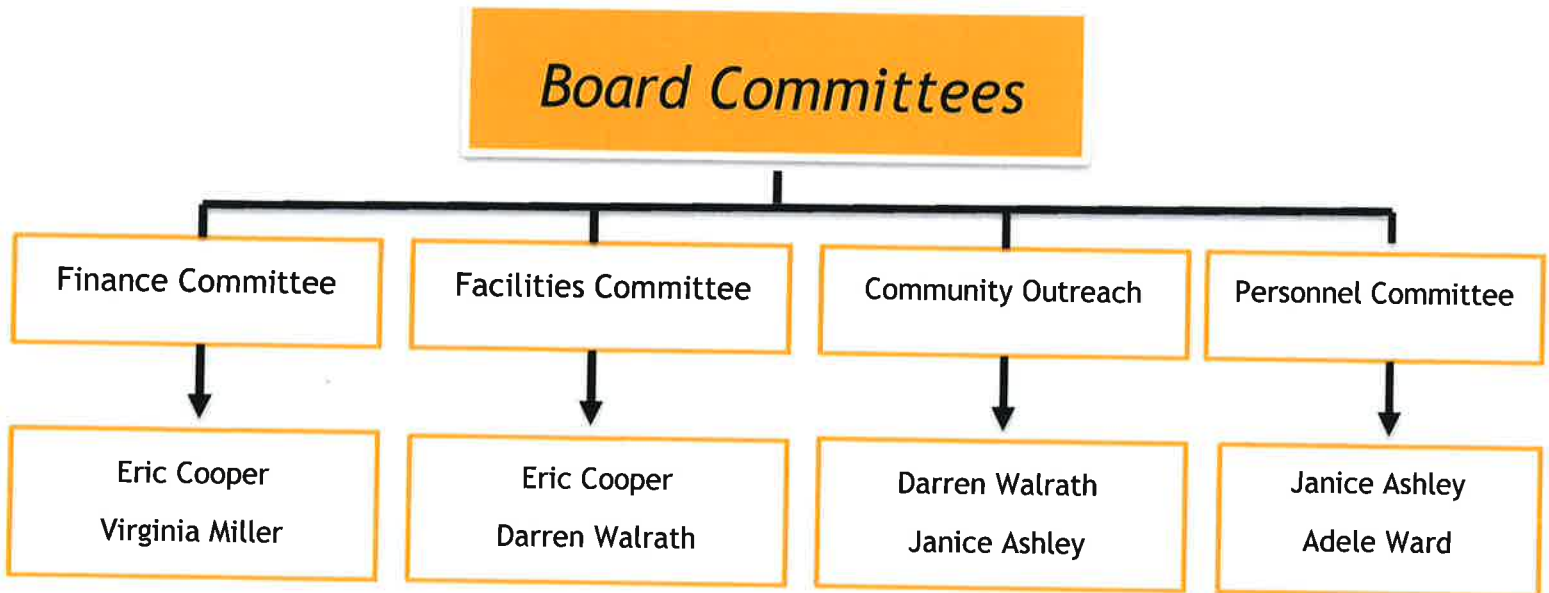


Darren Walrath
Board Member

Our Structure

Board of Directors

In the chart below, each committee is outlined. Each committee meets separately on an as needed basis. Each committee presents a verbal report of the committee's functions at the monthly schedule Board meeting.



OUR PROVIDERS



Ronald J. Ostrom, D.O.
Medical Director

Dr. Ronald Ostrom is an Emergency Medicine physician in the county of kern. He is affiliated with multiple hospitals in the area, including Bakersfield Heart Hospital, Mercy Hospitals of Bakersfield, as well as the Medical Director for Hall Ambulance. Dr. Ostrom received his medical degree from the College of Osteopathic Medicine of the Pacific and has been in practice for 20 years. He is one of seven providers, as well as the Medical Director of the West Side Family Health Care Facility. Dr. Ostrom resides in Bakersfield with his wife and two children.

Dina Villanueva, D.O.



Dr. Dina Villanueva is a family practice physician who has worked for West Side Health Care District since November 2018. Dr. Villanueva has been a physician for almost 30 years, since she graduated from the Western University of Health Sciences in Pomona, CA. She has worked most of her career in underserved areas, namely with the Alaskan Natives under the Indian Health Service (IHS) in Barrow & Wrangell, Alaska; the inmates in the California Department of Corrections & Rehabilitation (CDCR) in Central, CA; and numerous Federally Qualified Health Care (FQHC) facilities in Central & Southern, CA. She is happy to now work in Taft, CA for the Federally Qualified Healthcare (FQHC) facility operated by West Side Health Care District because there is such a need for a primary care physician in such an underserved area. She is open and willing to share what she knows about traditional and alternative medicine to all patients that can receive any benefit from her decades of experience.

Heather Bosma, MSN, RN, PHN, FNP-C



Heather Bosma graduated with her Bachelor of Science in Nursing from Fresno State in 2005, and began her career as a pediatric nurse at Valley Children's Hospital in Madera, California and later at Cottage Children's Hospital in Santa Barbara, California. She continued her education and obtained a Master of Science in Nursing and School Nurse Credential from California State University of Bakersfield in 2010. Heather worked as the school nurse for Taft City Schools and Taft High School from 2008-2012. In 2013 she attended Western University of Health Sciences and received her Family Nurse Practitioner Certificate. Heather is dedicated to providing comprehensive healthcare, and encouraging health promotion in individuals and the community. On her days off she enjoys spending time with her family, being outdoors, and cooking.

Abundio Castillo, MSN, RN, PHN, FNP-C



Abundio Castillo was born in Mexico and moved to the United States of America in 1993. When he came to USA, he did not speak English, therefore, he went to adult school and then enrolled at Santa Barbara City College. In Mexico, he studied Business administration, but always wanted to work in the medical field. In Santa Barbara City College, he met a wonderful mentor that was a nurse, and she guided him to get his LVN and RN license. During his career as RN he held many positions from staff nurse to director and manager of the emergency room at dignity hospitals in Bakersfield. Abundio moved to Bakersfield about 13 years ago, and has been working to serve the Kern County community and he found out that a lot of people lacks the medical care attention, therefore, to better serve our community, he went back to school to become a Family Nurse Practitioner. He graduated in 2018 from Charles R. Drew University School of Medicine and Science. Since then, and has been working at Memorial Hospital ER, Priority Urgent Care and currently a West side Family Health Care Clinic in Taft. Abundio is bilingual in Spanish and English. He feels much rewarded to be able to help our Kern county community. Abundio is happily married and has 4 children.

Elizabeth White, MSN, RN, FNP-C



Beth is a Family Nurse Practitioner and Board Certified by the American Association of Nurse Practitioners Born and raised in Bakersfield, CA; she began her nursing career in 2011, working as a Registered Nurse in the Intensive Care Unit. Beth holds both a Bachelor's Degree and Master's Degree in Nursing from California State University, Bakersfield.

Beth is dedicated to serving the residents of West Kern County. She is qualified to diagnose and treat a wide array of conditions across the entire lifespan and believes in working collaboratively with each individual to achieve their best possible state of health.

District Leadership



Gerald A. Starr, District Office Executive Director, MPH, FACHE

Gerald (Jerry) was born in Jerome, AZ. Jerry graduated from the University of Oklahoma with a degree in Business Administration and received a commission as a Second Lieutenant in the Medical Service Corps. Jerry later earned his Masters of Public Health degree from Yale University. Jerry left the Air Force with the rank of Major with over 23 years of active service. Jerry's has served Kern County for over 30 years in CEO, COO and Vice President Positions at Bakersfield Memorial Hospital, Kern Medical Center, Mercy Hospital and Delano Regional Medical Center. Jerry is married to Robin. He is a Charter Member and Past President of the Rotary Club of Bakersfield Breakfast. Jerry also enjoys volunteer work in his Church, as a CASA Advocate, and serving at the Guild House in support of the Henrietta Weill Memorial Child Guidance Clinic.



Robyn Melton, District Manager

Born in Taft, and a lifelong resident of the Westside, Robyn is proud to be part of such a great community. An active member of the Taft Kiwanis club, she loves participating in community service. She also serves as a Board member for the West Side Cemetery District. Robyn has been employed with the District since April 2008 and serves as Clerk of the Board. She is responsible for overseeing all of the day to day operations of the District, as well as handling many HR-related activities. She looks forward to all the wonderful progress and growth in store for the Taft Community. Robyn enjoys camping and traveling with her family. She is married to her husband Steven, they have three grown children.



Ryan Shultz, Director of Clinical Operations

Ryan was born and raised in Bakersfield, CA, and graduated from Westmont College with a degree in Political Science. Ryan earned his Masters of Science in Health Care Administration from California State University Bakersfield. He is also a graduate of the Kern Leadership Academy. Previously, Ryan served the Westside as staff to Kern County's Fourth District Supervisor. As a part of his graduate studies, Ryan's thesis analyzed best practices for a Rural Health Clinic. As Director of Clinical Operations his duties include oversight and management of the Clinic's operations and the District's revenue cycle. Ryan is married to Brittany and together they have two children Emery and Everett.

E-mail Ryan at rshultz@wshcd.org



Summer Wood-Luper, Clinic Director, BSN, PHN

Raised in the Pacific Northwest, Summer has a true love of nature, enjoying exercise, outdoor activities, and community events. After meeting her husband and completing her Associate in Arts degree at Taft College, she went on to pursue her Bachelor of Science in Nursing and Public Health Nursing License at California State University Bakersfield in 2008. Now married with two children, Summer has chosen to make Taft her home and has resided here since 2002. She is committed to helping her community members attain the highest level of health and wellness through her role as Clinic Director.



Health Services

Family Practice • Pediatrics • Urgent Care • X-Ray Services • Workers Comp

Patients Served: Fiscal Year 2019 (July 1st 2018-June 30, 2019)

<i>Visit Type</i>	<i>Census</i>	<i>Patient Lives</i>
Adult	9,622	4,382
Pediatrics	6,862	2,953

Topping Off Ceremony

February 20th, 2019



The West Side Health Care District celebrated the new outpatient clinic on Friday, July 13th, 2018.

The ceremony marked a new beginning and another step to rebuilding the community's health care infrastructure.

"This is a symbol of a new beginning for us," Health Care District Board President Eric Cooper said.



Community Outreach

Taking immense pride in our youth and community, the District and Board members are dedicated to supporting a wide variety of community and charitable activities.

Halloween Spooktacular



The District had the opportunity to participate in the community Spooktacular event on Halloween.

The event was well attended and there was always a line for our ice cream truck inspired Bean Bag Toss.



Left to Right: Summer Wood-Luper, Emily Jackson, Carrie Coleman, Jerry Starr, Meghan Bravo, Robyn Melton

Career Day Events



Lincoln Elementary School



Maricopa Unified School



Taft Union High School

Sports Physicals, 2019



West Side Family Health Care looks forward to supporting the community by taking part in performing the West Side Recreation and Park and Taft Union High School Sports Physicals. This year our staff completed 86 physicals.

Starting the school year off with a bang, we were given a great opportunity to be a part of preparing our TUHS athletes for the upcoming sports season. We were able to perform physicals in two days! Go Wildcats!!



West Side Health Care District

Balance Sheets

WESTSIDE HEALTHCARE DISTRICT

	As of 6/30/2018	As of 6/30/2019
Assets		
<u>Current assets:</u>		
Cash and cash equivalents	\$ 4,638,431	\$ 5,039,391
Short term investments	3,649,994	3,738,161
Patient Accounts Receivables, net	200,995	161,716
Grant and other receivables	112,521	73,436
Property Tax Receivables	45,474	31,892
Settlements third party payer	1,109,089	1,432,696
Prepaid expenses and other assets	42,055	70,271
Total current assets	9,798,559	10,547,562
Land and Land Improvements	400,978	428,029
Buildings	2,156,290	2,212,747
Equipment	517,073	533,771
Construction in Progress	1,364,690	4,392,787
Accumulated Depreciation	(1,064,497)	(1,105,938)
Capital Assets, net of accumulated depreci	3,374,534	6,461,396
Total assets	\$ 13,173,093	\$ 17,008,959
Liabilities and Net Position		
<u>Current liabilities:</u>		
Line of Credit	\$ -	\$ -
Accounts payable and accrued expenses	157,895	148,156
Accrued payroll and related liabilities	133,947	173,682
Deferred revenue	-	1,000,000
Total current liabilities	291,841	1,321,838
Total liabilities	291,841	1,321,838
Net position:		
Unrestricted	12,881,252	15,687,121
Total net position	12,881,252	15,687,121
Total liabilities and net position	\$ 13,173,093	\$ 17,008,959

Statements of Revenues, Expenses and Changes in Net Position

West Side Health Care District

District Tax Revenues: The District receives much of its financial support from parcel taxes. These funds are used to support operations and meet required debt service agreements. They are classified as non-operating revenue as the revenue is not directly linked to patient care. Parcel taxes are levied by the County on the District's behalf during the year, and are intended to help finance the District's activities during the same year. The County has established certain dates to levy, lien, mail bills, and receive payments from property owners during the year. Parcel taxes are considered delinquent on the day following each payment due date.

Statements of Revenues, Expenses and Changes in Net Position

WESTSIDE HEALTHCARE DISTRICT

	YTD 6/30/18	YTD 6/30/19	Budget YTD 6/30/19	Variance
Revenues and other support				
Patient services revenue, net	\$ 2,391,512	\$ 2,635,804	\$ 2,876,256	\$ 240,452
Contract revenues	550,894	501,984	503,246	1,262
Rents	9,600	9,840	9,600	(240)
Other revenues	130,373	114,708	23,200	(91,508)
Total revenues	3,082,379	3,262,336	3,412,302	149,966
Expenses				
Salaries and wages	1,395,545	1,819,436	1,848,847	29,411
Employee benefits	342,273	311,972	421,256	109,284
Professional Medical fees	1,412,170	1,197,716	1,004,637	(193,079)
Professional fees	374,253	481,308	358,320	(122,988)
Purchased services	215,570	216,276	347,501	131,225
Supplies	146,108	181,252	155,741	(25,511)
Repairs and maintenance	81,802	73,450	50,610	(22,840)
Rents	8,345	18,532	8,345	(10,187)
Utilities	43,994	51,301	39,468	(11,833)
Travel, meeting and conferences	58,910	34,780	47,000	12,220
Recruiting	80,758	109,944	55,000	(54,944)
Insurance	75,048	96,426	71,055	(25,371)
Other expenses	42,865	98,023	34,905	(63,118)
Depreciation and amortization	111,000	118,452	111,000	(7,452)
Total expenses	4,388,642	4,808,868	4,553,685	(255,183)
Excess Expenses over revenues and other su	(1,306,263)	(1,546,532)	(1,141,383)	405,149
District Tax Revenues	1,313,800	1,352,400	1,352,400	(0)
Capital Contributions	-	3,000,000	-	(3,000,000)
Total Non operating Revenue	1,313,800	4,352,400	1,352,400	(3,000,000)
Increase(decrease) in net position	7,537	2,805,869	211,017	(2,594,852)
Net position at <i>beginning of the year</i>	12,873,715	12,881,252	12,947,031	
Net position at the <i>end of the period</i>	\$ 12,881,252	\$ 15,687,121	\$ 13,158,048	

West Side Health Care District

Statements of Cash Flows

WESTSIDE HEALTHCARE DISTRICT

	YTD 6/30/18	YTD 6/30/19
Increase(decrease) in net position	\$ 7,537	\$ 2,805,869
Add/(deduct) Non Cash items		
Depreciation	111,000	118,452
Changes in operating assets and liabilities		
Patient account receivable	269,004	39,278
Grant and other receivables	71,605	39,085
Property Tax Receivables	(11,124)	13,582
Settlements third party	(829,088)	(323,606)
Prepaid expenses and deposits	(7,603)	(28,216)
Accounts payable and accrued expenses	(37,967)	(9,738)
Accrued payroll and related liabilities	(4,736)	39,735
Deferred revenue	-	1,000,000
Net Cash provided by operating act	(431,372)	3,694,441
Cash flows from investing activities		
Acquisition of Property Plant and Equipmer	(711,228)	(3,205,314)
Changes in short term investments	(59,666)	(88,167)
Net Cash used in investing activities:	(770,894)	(3,293,481)
Cash flows from financing activities		
Net cash used by financing activitie	-	-
Net change in cash and cash equivalents	(1,202,266)	400,960
Cash at the beginning of the year	5,840,697	4,638,431
Cash at the end of the period	\$ 4,638,431	\$ 5,039,391

Budget 2019/2020

West Side Health Care District

West Side Health Care District FYE 6/30/20 Proposed Budget WTB		Code	Proposed Budget 2019/2020
	Visits		
	Xrays		
4088.49	Outpatient Clinic Gross Revenues	24.00	(3,115,045)
4088.51	Bad Debt Recovery	27.00	(2,500)
4088.60	Contractual Adjustments	24.00	538,400
4088.90	Flu shot, Lab income, physicals	24.00	(1,500)
4088.91	Medical Records copy fees	27.00	(2,000)
4088.92	Other	27.00	(16,500)
4088.99	Settlement Revenue	24.00	(592,825)
4180.45	City of Taft CCF	26.00	(536,121)
7088.09	Other salaries and wages	28.00	1,713,170
7088.10	Payroll taxes	28.10	137,473
7088.12	Vacation, Holiday and Sick Leave	28.10	72,705
7088.13	Group Health & Welfare Insurance	28.10	97,192
7088.14	Group Life Insurance	28.10	3,078
7088.15	Pension and Retirement	28.10	29,485
7088.16	Workers Compensation Insurance	28.10	23,984
7088.18	Other payroll related benefits	28.10	32,397
7088.20	Medical - Physicians	29.10	755,419
7088.21	Medical - Therapists and Others	29.10	10,000
7088.22	Consulting and Management fees	29.00	143,811
7088.23	Legal	29.00	4,500
7088.26	Other contracted services	29.00	165,743
7088.35	Oxygen and Other Medical Gases	31.00	2,283
7088.38	Pharmaceuticals	31.00	50,005
7088.41	Other Medical Care Materials and Supplies	31.00	1,500
7088.43	Food	31.00	1,500
7088.44	Linens	31.00	4,301
7088.45	Cleaning supplies	31.00	12,000
7088.46	Office and Administrative supplies	31.00	5,705
7088.47	Employee wearing apparel	31.00	5,000
7088.48	Instruments and Minor Medical Equipment	31.00	75,399
7088.50	Maintenance Supplies and labor	31.00	15,000
7088.61	Medical	31.00	0
7088.62	Repairs and Maintenance Grounds	32.00	80,311
7088.65	Collection Agencies	30.00	192,423
7088.69	Other purchased services	30.00	24,461
7088.72	Depreciation - Bldgs & Improvements	38.00	111,000
7088.75	Copier Lease	33.00	9,905
7088.80	Utilities - Electrical, Gas, Water, other	34.00	16,000
7088.81	Insurance - Malpractice	36.00	37,366
7088.83	Licenses and Taxes	37.00	3,148
7088.84	Advertising (billboards, photography)	37.00	10,000
7088.85	Telephone and Communications	34.00	14,667
7088.86	Dues and Subscriptions	37.00	12,073
7088.87	Outside Training	35.00	20,000
7088.88	Travel costs	35.00	6,000
7088.89	Recruiting	35.10	75,000
7180.20	Medical - Physicians	29.10	449,315
7180.21	Medical - Therapists and Others	29.10	43,125
7180.85	Medical - Physical On-Call	29.10	125
7180.88	Travel costs	35.00	3,000
8610.09	Other salaries and wages	28.00	355,497
8610.10	Payroll taxes	28.10	28,020
8610.12	Vacation, Holiday and Sick Leave	28.10	17,175
8610.13	Group Health & Welfare Insurance	28.10	20,610
8610.14	Group Life Insurance	28.10	653

Budget 2019/2020**West Side Health Care District****West Side Health Care District****FYE 6/30/20****Proposed Budget WTB**

	Code	Proposed Budget 2019/2020	
8610.16	Workers Compensation Insurance	28.10	4,977
8610.18	Other payroll related benefits	28.10	6,870
8610.22	Consulting and Management Fees	29.00	9,000
8610.23	Legal	29.00	50,000
8610.24	Accounting /Audit Fees	29.00	178,667
8610.43	Food	31.00	2,500
8610.46	Office and Administrative Supplies	31.00	16,000
8610.62	Repairs and Maintenance Grounds	32.00	15,000
8610.69	Other purchased services	30.00	2,500
8610.75	Rental/lease equipment	33.00	13,583
8610.80	Utilities	34.00	7,270
8610.81	Community Outreach (?)	37.00	27,454
8610.82	Insurance	36.00	41,340
8610.83	Licenses and Taxes	37.00	800
8610.84	Security	30.00	1,811
8610.85	Telephone and communications	34.00	2,400
8610.86	Dues and Subscriptions	37.00	13,358
8610.87	Outside Trainings	35.00	15,000
8610.88	Travel	35.00	13,866
8610.90	Other Direct Expenses	37.00	2,500
8620.90	Other	37.00	6,261
9060.00	Income, Gains and losses from investments	27.00	(15,000)
9160.00	Property Tax Revenues	40.00	(1,400,000)
9260.90	Rent Senior House	25.00	(6,000)
9261.90	Rent Burke	25.00	(3,960)
9400.00	Miscellaneous Income	27.00	(2,500)
9520.62	Repairs and Maintenance Grounds	32.00	5,369
			<u>179,370</u>

Directory

<i>Name</i>	<i>Title</i>	<i>Email</i>	<i>Phone Number</i>
Gerald Starr	Executive Director	gstarr@wshcd.org	Office: 661-765-7234 Direct Line: 661-745-4924
Ryan Shultz	Director of Clinical Operations	rshultz@wshcd.org	Office: 661-765-7234 Ext. 209
Ronald J. Ostrom, D.O.	Medical Director	rostrom@wshcd.org	Office: 661-765-1935
Summer Wood-Luper	Clinic Director	swoodluper@wshcd.org	Office: 661-765-1935 Ext. 123
Robyn Melton	District Manager	rmelton@wshcd.org	Office: 661-765-7234 Ext. 201

WEST SIDE HEALTH CARE DISTRICT



District Office

Mailing Address:

119 Adkisson Way
Taft, CA 93268

Phone: 661-765-7234

Fax: 661-765-7284

District Office Hours:

Monday-Friday
8:00am-5:00pm

Website: www.wshcd.org

West Side Family Health Care

Mailing Address:

100 E. North Street
Taft, CA 93268

Phone: 661-765-1935

Fax: 661-765-1928

Clinic Hours:

Monday-Friday
8:00am-9:00pm

Saturday, Sunday, & Holidays
10:00am-9:00pm

Website: www.wshcd.org